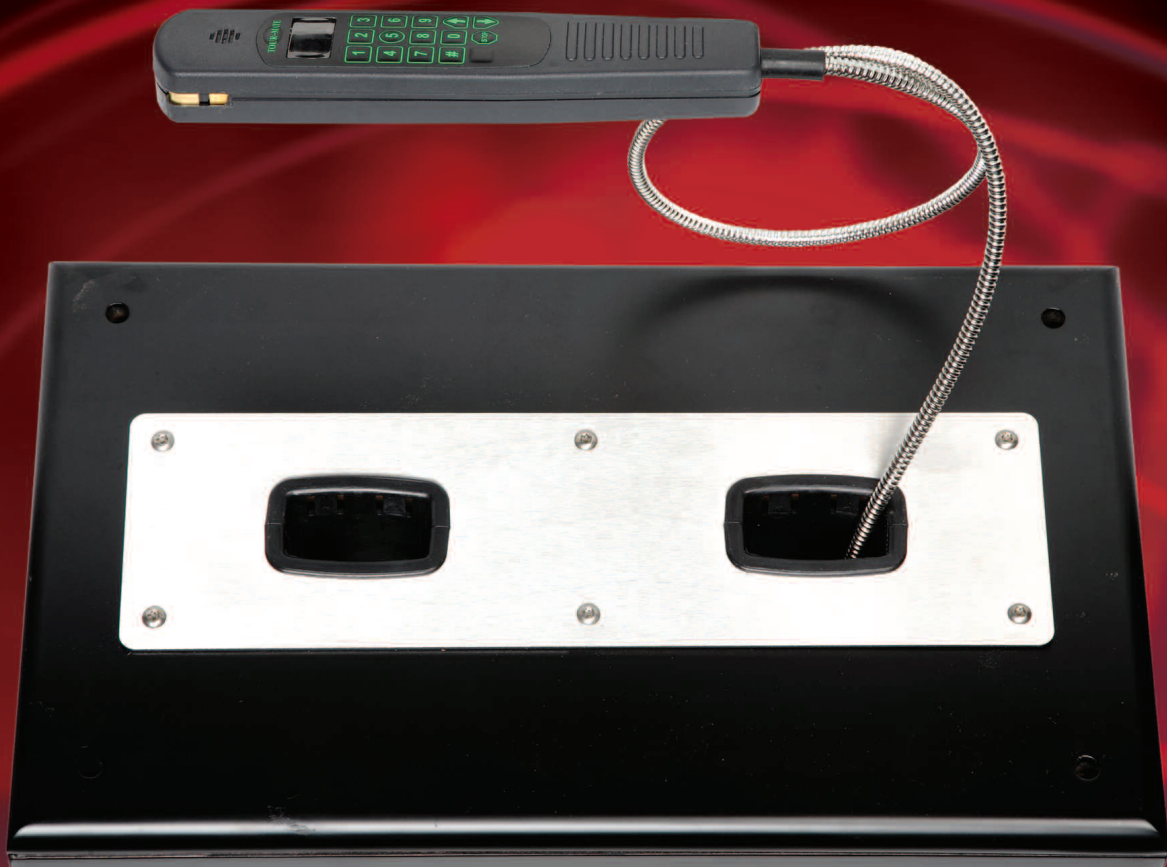
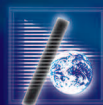


# TOUR-MATE TC-100



## TETHERED MESSAGE DELIVERY SYSTEM



TOUR-MATE

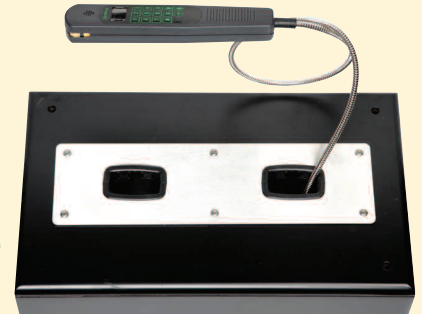
GUIDING VISITORS INTO THE FUTURE

# THE TOUR-MATE TC-100

## The Tour-Mate TC-100 Tethered Message Delivery System.

### Perfect for:

- Unattended exhibit locations
- Point of sale assistance
- Retrofitting existing exhibits to add an audio component
- Can be used for locations requiring a limited number of messages
  - Integration into new exhibits requiring audio



The TC-100 Tethered Message Delivery System runs on AC power and never needs re-charging. Each unit comes complete with:

- One or two armored cable Listening Wands each with 99 Primary Message capability.
- One layered message available for each Primary Message.
- One Mounting bracket with storage pockets for 2 Listening Wands.
- One or two 5V AC adaptors which connect to the TC100 pocket plate. The tether screws into the bottom of the pocket plate and transfers power from the line to the wand.

### TECHNICAL SPECIFICATIONS:

The TC-100 unit has been designed to be mounted into a client provided custom enclosure. The TC-100 uses a re-writable mini-SD card to store messages in MP3 format permitting easy on-site message changes.

### LISTENING WAND

- Case: Grey ABS plastic.
- Keypad: Polydome, membrane with telephone style layout, # 1-9, up/down volume and stop.
- Tether: 42" armored cable.

### MOUNTING BRACKET:

- The TC-100 has been designed to be mounted into your custom fabricated enclosure.

### MOUNTING PLATE:

- L 14" x W 4" with built in cable stress relief.
- Wand Storage: 2 ABS pockets.
- Material: Steel.
- Color: Black.
- Finish: Matte.



For more information about the TC-100 contact:

Tour-Mate Systems Canada Ltd.

(800) 216-0029

Or e-mail us at [info@tourmate.com](mailto:info@tourmate.com)